



September 11, 2022

Dear Music Teachers:

On behalf of the North Dakota Music Educators Association, I am pleased to announce the 56th ANNUAL NORTH DAKOTA ALL-STATE BAND, MIXED CHORUS, TREBLE CHORUS, ORCHESTRA, JAZZ BAND, and JAZZ CHOIR will be held at the Bismarck Civic Center & Exhibition Hall on March 23rd to the 25th. The All-State event will conclude with three grand concerts, with all three being on Saturday.

This includes all the information you will need concerning the following:

- Audition Information
- Audition Sites
- Audition Requirements
- Audition Registration online

PLEASE READ THIS MANUAL THOROUGHLY! If you have any questions, please email me at:

jon.baumann@msd1.org

Or call me at:
701-751-6501

I look forward to seeing you in March!

Sincerely,

Jon Baumann
ND All-State Auditions & Finance Manager

AUDITION INFORMATION

- AUDITION FEES ----- \$16.00 NAFME
\$32.00 NON-NAFME
- LATE AUDITION FEE ----- \$50.00 per School
- REGISTRATION FEE FOR STUDENTS SELECTED ----- \$30.00 NAFME
\$60.00 NON-NAFME
- AUDITION APPLICATION DEADLINE ----- November 7, 2022
- LATE AUDITION
APPLICATION DEADLINE ----- November 9, 2022
- AUDITION SCHEDULES
SENT TO SCHOOLS ----- December 12, 2022
- ELIGIBILITY
The North Dakota All-State Band, Orchestra, Chorus, and Jazz Ensemble is open (by audition) to string, winds, percussion, and voice student musicians presently (at the time of audition) in grades 9, 10, 11, or 12 in North Dakota High School Activities Association member schools. Students who are not presently in grades 9, 10, 11, or 12 are not eligible to participate in All-State. Also, students must be eligible according to NDHSAA and individual school rules at the time of their audition. They must also be eligible at the time of the festival in order to participate.
- It is a NDMEA requirement that all students, including home schooled students, auditioning for the North Dakota All-State Band, Orchestra, Chorus and Jazz Band and Jazz Choir must be a member of their respective high school performing groups and have the approval of the appropriate director. In the event there is no string program in the school, either the band or choral director must register the student. A student will not be permitted to audition without the appropriate director's approval.
- **ALL REGISTRATIONS ARE DONE ONLINE.** No paper copies will be accepted. DUE DATE FOR REGISTRATIONS IS NOV 7. AFTER NOV 7 A LATE FEE WILL BE ASSESSED. All payments must be postmarked before NOV 9, or they will NOT be accepted. **The link to the registration can be found on the ND All-State website.**

ndallstate.org/auditions

- Each director will need to complete one teacher form and a student information form for each auditioning student.
- Fees must be paid by Credit Card or with one school check for all applicants per program. The one check should be made out to: **NORTH DAKOTA ALL-STATE. All checks should be sent to Jon Baumann, Mandan High School, 905 8th Ave NW, Mandan, ND 58554. Please include with the check how many registrants are being paid for.**
- **No exceptions for late applications after November 9, 2022!**
- **AN ORIGINAL COPY MUST BE USED BY THE SOLOIST, ACCOMPANIST, AND JUDGE.**
- **ABSOLUTELY NO PHOTOCOPIES OF COPYRIGHTED MUSIC WILL BE ALLOWED AT THE ALL-STATE AUDITIONS. VIOLATION WILL MEAN DISQUALIFICATION OF THE STUDENT. PAGE TURNS FOR THE ACCOMPANIST CAN BE PHOTOCOPIED.**
- **STUDENTS MUST HAVE AN ORIGINAL COPY OF THEIR SOLO FOR THE ADJUDICATOR OR THEY WILL BE DISQUALIFIED! THE ADJUDICATOR WILL NOT LOOK “OVER THE SHOULDER” OF THE STUDENT.**
- **IF MUSIC IS PURCHASED / DOWNLOADED ON-LINE, THE STUDENT WILL NEED TO SUPPLY PROOF THE MUSIC WAS PURCHASED, INCLUDING THE ACCOMPANIST AND ADJUDICATOR COPIES.**
- For the PERCUSSION audition, the student will select which area he/she will perform a minute solo for the audition (i.e., Snare, Mallet, Timpani). The student must complete the entire audition.
- For those auditioning on two instruments (i.e., flute and piccolo, soprano and bass clarinet, instrument and voice), you must have two separate audition forms, two separate time slots and pay two separate audition fees. This also includes Jazz auditions.
- Percussionists must bring their own sticks and mallets.
- **Vocalists cannot audition for more than one vocal category. They must choose from the following: Soprano 1, Soprano 2, Alto 1, Alto 2, Tenor 1, Tenor 2, Bass 1, Bass 2.**
- All required scales must be MEMORIZED. The solo and required etudes do not have to be memorized.
- The SIGHT-READING ETUDE will be 16 measures in length. The student will have 20 seconds to study the piece before playing it. Tempo will be set by the judge using a metronome. Vocalists will be given a starting pitch at Measure 1 and Measure 9.

- Students can audition at any site. However, they **MUST** audition at the site for which they registered. **There will be no make-up auditions scheduled in the event of illness or conflicts.**
- In the event of questionable weather, call the person listed as "Site Manager" for the cancellation information. Cancellation is at the discretion of the Site Manager and the Auditions Manager. If it is impossible to hold the auditions on the scheduled day, alternate plans will be made known to the directors.
- No one will be allowed in the audition room other than the performer, adjudicator, and accompanist.
- There will be **NO REFUNDS** made to schools unable to attend for whatever reason.
- Students selected to an All-State group, **MUST** attend **ALL** rehearsals and the final performance.
- **DIRECTORS: PLEASE CHECK YOUR REGISTRATIONS CAREFULLY. BE SURE IT IS COMPLETELY AND THOROUGHLY FILLED OUT! CHECK POSSIBLE 4-YEAR AWARD STUDENTS CAREFULLY!!**
- Each director (i.e. Band, Choir, Orchestra, Jazz) must fill out a director registration online and a registration for each student auditioning. No paper copies...link is on the ndallstate.org website.
- **ONE CHECK ONLY, PLEASE!** (By School or by Director..for schools with more than one director.) No individual checks or cash please. There is a link for School Credit Card payments on the ndallstate.org website.
- **A LATE FEE WILL BE ASSESSED FOR INCOMPLETE REGISTRATIONS. MAKE SURE YOUR REGISTRATIONS ARE COMPLETE, ACCURATE AND ON TIME.**

Directors: Current NAFME membership for 2022 – 2023 is determined as of November 1, 2022. One director's membership does not apply to all directors in the school system. The audition fee for a particular student is determined by the director's membership status. If the fees sent are incorrect, a late fee WILL be assessed.

IMPORTANT

Each year when the results of the All-State Auditions are announced, directors are asked to notify the auditions manager as soon as they are aware a student will not be able to participate. The next alternate will then be called by the auditions manager to take that vacated spot. Also, as stated in this manual, all students auditioning and selected to the All-State groups must be members of a high school musical organization, including home schooled students.

Over the years, it has become a growing problem with directors not notifying the Auditions Manager of students who are unable to participate after they were selected. Thus, we have had alternates who could have been participating members of an All-State group, but weren't because of no notification. We were also made aware of the fact that directors have signed off on an application for home schooled students even though the students were not enrolled in the high school musical organization. These same students were selected to an All-State group, in violation of this rule.

Because of these unfortunate situations, the following policy has been developed by the NDMEA and will be enforced.

IF A STUDENT WHO HAS BEEN SELECTED TO AN ALL-STATE PERFORMING ENSEMBLE IS UNABLE TO PARTICIPATE FOR ANY REASON, THE DIRECTOR OF THAT STUDENT MUST IMMEDIATELY NOTIFY THE AUDITIONS MANAGER.

A DIRECTOR SHALL NOT ALLOW A STUDENT TO AUDITION OR PARTICIPATE IF SELECTED, IF THAT STUDENT IS NOT A MEMBER OF THE SCHOOL MUSICAL ORGANIZATION.

(EXCEPTION TO THIS RULE IS IF THERE IS NO STRING TEACHER IN THE SCHOOL)

- Audition results will be posted on the ND All-State web site when completed, but no later than **January 30, 2023**. A hard copy of the results will NOT be mailed to every school. The web site address is:

www.ndallstate.org

2023
WIND, PERCUSSION, VOCAL AND JAZZ AUDITIONS

AUDITION SITES AND TIMES

THURSDAY, JANUARY 5 & FRIDAY, JANUARY 6

Bismarck State College

John Darling - john.darling@bismarckstate.edu

Music Department

P.O. Box 5587

Bismarck, ND 58506

Morning / Afternoon / Evening

THURSDAY IS VOCAL JAZZ ONLY

SATURDAY, JANUARY 7

Minot Magic City Campus

Evan Meiers - evan.meiers@minot.k12.nd.us

Music Department

1100 11th Avenue SW

Minot, ND 58701

Morning

Grand Forks Central HS

Paul Barta - pbarta040@mygfschools.org

Music Department

115 N 4th St

Grand Forks, ND 58203

Afternoon / Evening

SUNDAY, JANUARY 8

TBA

Keith Eider - eiderk@fargoschools.org

Discovery Middle School

1717 40th Ave S

Fargo, ND 58104

Afternoon / Evening

2023
STRING AUDITIONS

AUDITION SITES AND TIMES

FRIDAY, JANUARY 6

Grand Forks Central High School

Late Afternoon/Evening

Paul Barta - pbarta040@mygfschools.org
Music Department
115 N 4th St
Grand Forks, ND 58203

SATURDAY, JANUARY 7

Minot Magic City Campus

Morning

Evan Meiers - evan.meiers@minot.k12.nd.us
Music Department
1100 11th Avenue SW
Minot, ND 58701

Bismarck State College

Afternoon

John Darling - john.darling@bismarckstate.edu
Music Department
P.O. Box 5587
Bismarck, ND 58506

SUNDAY, JANUARY 8

TBA

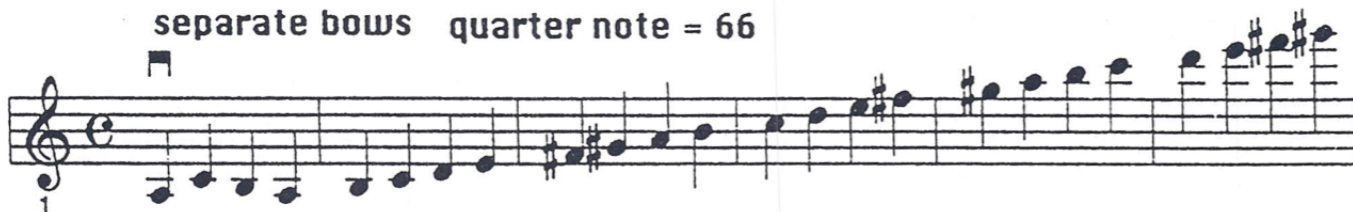
Afternoon

Keith Eider - eiderk@fargoschools.org
Discovery Middle School
1717 40th Ave S
Fargo, ND 58104

VIOLIN

1. SCALE ----- Three octave A melodic minor scale

separate bows quarter note = 66



slur 8 per bow quarter note = 66



2. Etude – On next page, Half note = 117
3. Solo – Student's Choice, 1-minute **maximum** length, unaccompanied
4. Sight-reading

Half Note = 117

343 *più sostenuto.*



p poco a poco più animato cre - - - - - scen - - - - -

347 do poco a poco

351

355

359 U

VIOLA

1. SCALE ----- Three octave C melodic minor scale
separate bows quarter note = 66

1

7

14

16

2. Etude – On next page, Half Note = 117
3. Solo – Student's Choice, 1-minute **maximum** length, unaccompanied
4. Sight-reading

Viola Etude – ND All-State Auditions 2023

Half note = 117

343 *Poco più animato*

p cre - - scen - - do poco a poco

f *sim.*

sf

CELLO

1. SCALE ----- Three octave D melodic minor scale

separate bows quarter note = 66

The first staff of music shows the first seven measures of the three-octave D melodic minor scale. It begins on measure 1, marked with a '1' below the staff. The scale is written in bass clef with a key signature of one flat (B-flat). The notes are: D2, E2, F2, G2, A2, Bb2, C3, D3, E3, F3, G3, A3, Bb3, C4, D4, E4, F4, G4, A4, Bb4, C5, D5, E5, F5, G5, A5, Bb5, C6, D6, E6, F6, G6, A6, Bb6, C7, D7. The notation uses various note values and rests to represent the scale across three octaves. The second staff continues the scale from measure 7, marked with a '7' below the staff, and ends with a double bar line.

slur 8 per bow quarter note = 66

The third staff of music shows the continuation of the three-octave D melodic minor scale, starting at measure 14, marked with a '14' below the staff. It features slurs and bow marks (V) indicating the grouping of notes for bowing. The scale continues from the previous staff, covering measures 14 through 16. The fourth staff continues the scale from measure 16, marked with a '16' below the staff, and ends with a double bar line. The notation includes various note values and rests to represent the scale across three octaves.

2. Etude – On next page, Half note = 117
3. Solo – Student's Choice, 1-minute **maximum** length, unaccompanied
4. Sight-reading

Cello Etude – ND All-State Auditions 2023

Half note = 117

238 **N**

Cello →

Bass →

243

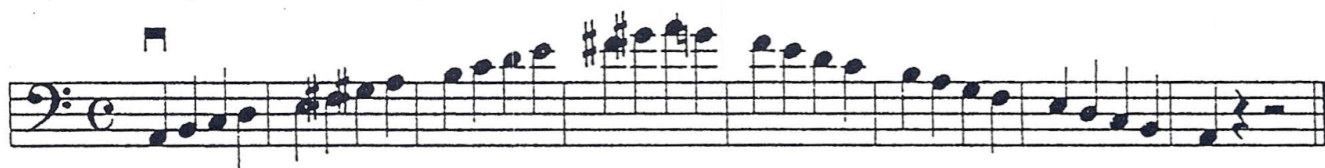
249 **ff** **0** Pesante sostenuto.

255 **a tempo**

BASS

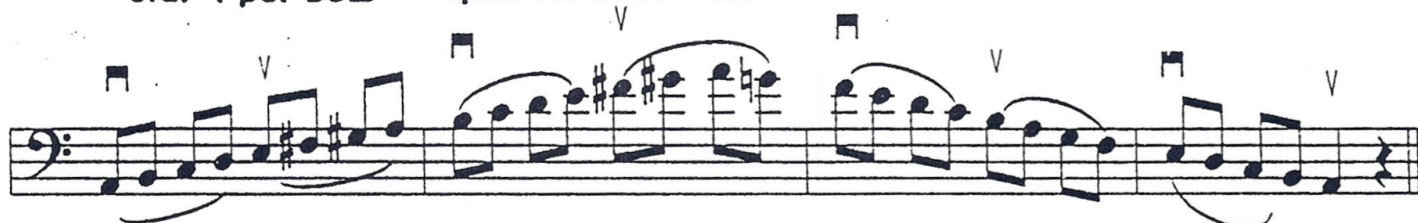
1. SCALE ----- Two octave A melodic minor scale

separate bows quarter note = 66



1

slur 4 per bow quarter note = 66



9

2. Etude – On next page, Half note = 117
3. Solo – Student's Choice, 1-minute **maximum** length, unaccompanied
4. Sight-reading

Half note = 117

lo →

238 **N**

→

243

249 **0** Pesante sostenuto.

255 *a tempo*

Handwritten musical score for piano, measures 238 to 255. The score is in G major (one sharp) and 4/4 time. Measures 238-248 feature a complex rhythmic pattern of eighth and sixteenth notes with various dynamics (f, mf) and articulations (accents, slurs). Measure 249 is marked 'Pesante sostenuto.' and features a half note followed by a series of eighth notes. Measure 255 is marked 'a tempo' and features a half note followed by a series of eighth notes. The score is written on two staves, with the right staff starting on a higher line than the left staff.

WIND AND PERCUSSION AUDITION REPERTOIRE

FORMAT FOR MAJOR SCALE:
(Add another octave for 3 octave scales)



FORMAT FOR CHROMATIC SCALE:



ALL SCALES MUST BE MEMORIZED
TEMPO INDICATED IS "MINIMUM" TEMPO

FLUTE & PICCOLO

1. SCALE ----- E Major, 2 octaves, quarter = 180, tongue up, slur down
 2. CHROMATIC ----- Flute: Low C to high C, 3 octaves, tongue, quarter = 120
Piccolo: Low D to high A, 2½ octaves, tongue, quarter = 120
 3. ETUDE ----- Rubank Advanced Method Volume I
P. 56 #31, quarter = 80
 4. SOLO ----- Student's choice, 1 minute **maximum** length, unaccompanied.
 5. SIGHTREADING
-

OBOE

1. SCALE ----- E Major, 2 octaves, quarter = 180, tongue up, slur down
2. CHROMATIC ----- Low C to high C, 2 octaves, tongue, quarter = 120
3. ETUDE ----- Rubank Advanced Method Volume I
P. 49, #16, eighth = 160
4. SOLO ----- Student's choice, 1 minute **maximum** length, unaccompanied
5. SIGHTREADING

B^b & E^b SOPRANO CLARINETS

1. SCALE ----- A^b Major, 2 octaves, quarter = 180, tongue up, slur down
 2. CHROMATIC ----- Low E to high G, 3½ octaves, tongue, quarter = 120
 3. ETUDE ----- Rubank Advanced Method Volume I
P. 51, #6, quarter = 180
 4. SOLO ----- Student's choice, 1 minute **maximum** length, unaccompanied
 5. SIGHTREADING
-

E^b ALTO, B^b BASS, EE^b, & BB^b CONTRA CLARINETS

1. SCALE ----- E Major, 2 octaves, quarter = 180, tongue up, slur down
 2. CHROMATIC ----- Low E^b to high C, 2½ octaves, tongue, quarter = 120
 3. ETUDE ----- Rubank Advanced Method Volume I (B^b Clarinet Book)
P. 50, #4, quarter = 132
 4. SOLO ----- Student's choice, 1 minute **maximum** length, unaccompanied
 5. SIGHTREADING
-

BASSOON

1. SCALE ----- E^b Major, 2 octaves, quarter = 180, tongue up, slur down
 2. CHROMATIC ----- Low B^b to high F, 2½ octaves, tongue, quarter = 120
 3. ETUDE ----- Rubank Advanced Method Volume I
P. 36, #21, quarter = 88
 4. SOLO ----- Student's choice, 1 minute **maximum** length, unaccompanied
 5. SIGHTREADING
-

ALTO, TENOR, & BARITONE SAXOPHONES

1. SCALE ----- B Major, 2 octaves, quarter = 180, tongue up, slur down
2. CHROMATIC ----- Low B^b to high F, 2½ octaves, tongue, quarter = 120
3. ETUDE ----- Rubank Advanced Method Volume I (Saxophone Book)
P. 46, #6, dotted quarter = 128
4. SOLO ----- Student's choice, 1 minute **maximum** length, unaccompanied
5. SIGHTREADING

TRUMPET & EUPHONIUM T.C.

1. SCALE ----- B Major, 2 octaves, quarter = 180, tongue up, slur down
 2. CHROMATIC ----- C - C, 2 octaves, quarter = 120, tongued
 3. ETUDE ----- Rubank Advanced Method Volume I
P. 47, #6, quarter note = 92
 4. SOLO ----- Student's choice, 1 minute **maximum** length, unaccompanied
 5. SIGHTREADING
-

HORN

1. SCALE ----- A Major, 2 octaves, quarter = 180, tongue up, slur down
 2. CHROMATIC ----- B^b - B^b, 2 octaves, quarter = 120, tongued
 3. ETUDE ----- Rubank Advanced Method Volume I
P. 53, #19, eighth = 144
 4. SOLO ----- Student's choice, 1 minute **maximum** length, unaccompanied
 5. SIGHTREADING
-

TROMBONE & EUPHONIUM B.C.

1. SCALE ----- A Major, 2 octaves, quarter = 180, tongue up, slur down
 2. CHROMATIC ----- B^b - B^b, 2 octaves, quarter = 120, tongued
 3. ETUDE ----- Rubank Advanced Method Volume I (Trombone Book)
P. 51, #6, quarter = 92
 4. SOLO ----- Student's choice, 1 minute **maximum** length, unaccompanied
 5. SIGHTREADING
-

TUBA

1. SCALE ----- A Major, 2 octaves, quarter = 180, tongue up, slur down
2. CHROMATIC ----- BB^b - B^b, 2 octaves, quarter = 120, slur up, tongue down
3. ETUDES ----- Rubank Advanced Method Volume I
P. 47, #6, quarter = 90
4. SOLO ----- Student's choice, 1 minute **maximum** length, unaccompanied
5. SIGHTREADING

2023 ND ALL-STATE PERCUSSION AUDITION

This audition includes six elements: classical snare, rudimental snare, mallet, timpani, solo of student's choice, and sight-reading. Student must play all elements in the order listed below.

1. Classical Snare Audition

Andante ♩ = 60

p *f*

mf *p* *sfz*

pp *f* *p*

f *p* *rit.*

2. Rudimental Snare Audition

Allegro ♩ = 120

Flam Tap Flamacue Single Drag Tap Single Drag

mf *sfz*

Triple Paradiddle Drag Paradiddle #2

p

5 stroke roll 6 stroke roll Single Paradiddle

Flam Paradiddle Flam 9 stroke roll

f *p* *f*

3. Mallet Audition

Sonata in F Major
George Frideric Handel

Allegro ♩ = 120

f L R *mf*

3 *f* L R L L

6 *p* R R *f* L L R R

4. Timpani Audition

♩ = 120

E \flat and B \flat

f *subito p* *ff* *mf*

5 *fp* *ff*

8 Tune E \flat to D and B \flat to A 4

12 *mf* *mp* *f*

16 *fp* *pp* *fp* *ff*

- The student's solo must be one minute in length, unaccompanied, and may be played on snare, mallet, or timpani.
- Students will sight-read both snare and mallet music.

Jazz Ensemble Audition Repertoire

Guidelines and Instructions

ALL SCALES MUST BE MEMORIZED



SCALES TO BE PLAYED IN A “SWING” PATTERN

Audition excerpts are from A Minor Matter – Friedrich – US Army Blues

IMPROVISATION (OPTIONAL)

The adjudicator will provide materials from the Jamey Aebersold recordings. The rhythm section will be provided for you. The student may also bring something prepared. The rhythm section recording must be provided by CD.

Saxophone

1. Scale – Swing Pattern C Major, 2 octaves, quarter=120
F Major, 2 octaves, quarter=120
2. Audition Excerpt- Quarter = 180 – minimum - Swing



3. Sight-reading
4. Improvisation

Jazz Ensemble Audition Repertoire

Wind Section Guidelines and Instructions

ALL SCALES MUST BE MEMORIZED



SCALES TO BE PLAYED IN A “**SWING**” PATTERN

Audition excerpts are from A Minor Matter – Friedrich – US Army Blues

IMPROVISATION (OPTIONAL)

The adjudicator will provide materials from the Jamey Aebersold recordings. The rhythm section will be provided for you. The student may also bring something prepared. The rhythm section recording must be provided by CD.

Trumpet

1. Scale – Swing Pattern C Major, 2 octaves, quarter=120
Bb Major, 2 octaves, quarter=120
2. Audition Excerpt - Students hoping to play lead should play both excerpts.
Quarter = 180 – minimum - Swing

Section Trumpet



Lead Trumpet

The musical score for Lead Trumpet is written in treble clef with a key signature of one sharp (F#). It consists of five main sections and a final solo/ending section.

- Section A:** Measures 11-18, 8 measures long. It begins with a whole rest.
- Section B:** Measures 19-26, 8 measures long. It begins with a whole rest.
- Section C:** Measures 27-35, 9 measures long. It begins with a quarter rest, followed by eighth and sixteenth notes, and ends with a whole rest.
- Section D:** Measures 36-43, 8 measures long. It begins with a quarter rest, followed by eighth and sixteenth notes, and ends with a whole rest.
- Section E:** Measures 44-50, 7 measures long. It begins with a quarter rest, followed by eighth and sixteenth notes, and ends with a whole rest.

Below the score, there is a box containing the text: SOLOS - BACKGROUNDS LAST X

3. Sight-reading
4. Improvisation

Jazz Ensemble Audition Repertoire Wind Section Guidelines and Instructions

ALL SCALES MUST BE MEMORIZED



SCALES TO BE PLAYED IN A “SWING” PATTERN

Audition excerpts are from A Minor Matter – Friedrich – US Army Blues

IMPROVISATION (OPTIONAL)

The adjudicator will provide materials from the Jamey Aebersold recordings. The rhythm section will be provided for you. The student may also bring something prepared. The rhythm section recording must be provided by CD.

Trombone

1. Scale – Swing Pattern Bb Major, 2 octaves, quarter=120
Ab Major, 2 octaves, quarter=120
2. Audition Excerpt - Quarter = 180 – minimum - Swing

A musical staff in Bb major, 2 octaves, quarter=120. The notation includes a key signature of two flats (Bb and Eb) and a 4/4 time signature. The excerpt consists of several measures of music, including a scale run and a series of chords. The notation is written in a style that suggests a swing feel, with a 'swing' pattern indicated by the notes and rests. The excerpt is divided into sections labeled F, G, and H, with measure numbers 57, 64, and 70 marked at the beginning of each section.

3. Sight-reading

4. Improvisation

Jazz Ensemble Audition Repertoire Wind Section Guidelines and Instructions

ALL SCALES MUST BE MEMORIZED



SCALES TO BE PLAYED IN A “SWING” PATTERN

Audition excerpts are from A Minor Matter – Friedrich – US Army Blues

IMPROVISATION (OPTIONAL)

The adjudicator will provide materials from the Jamey Aebersold recordings. The rhythm section will be provided for you. The student may also bring something prepared. The rhythm section recording must be provided by CD.

Bass Trombone

1. Scale – Swing Pattern Bb Major, 2 octaves, quarter=120 Start on Pedal Bb
Ab Major, 2 octaves, quarter=120 Start on Pedal Ab
2. Audition Excerpt - Quarter = 180 - minimum - Swing

A musical staff in bass clef, 4/4 time, starting on Bb2. The notation includes various musical symbols:

- Measure 197: Bb2, quarter note.
- Measure 198: Bb2, quarter note.
- Measure 199: Bb2, quarter note.
- Measure 200: Bb2, quarter note.
- Measure 201: Bb2, quarter note.
- Measure 202: Bb2, quarter note.
- Measure 203: Bb2, quarter note.
- Measure 204: Bb2, quarter note.
- Measure 205: Bb2, quarter note.
- Measure 206: Bb2, quarter note.
- Measure 207: Bb2, quarter note.
- Measure 208: Bb2, quarter note.
- Measure 209: Bb2, quarter note.
- Measure 210: Bb2, quarter note.
- Measure 211: Bb2, quarter note.
- Measure 212: Bb2, quarter note.
- Measure 213: Bb2, quarter note.
- Measure 214: Bb2, quarter note.
- Measure 215: Bb2, quarter note.
- Measure 216: Bb2, quarter note.
- Measure 217: Bb2, quarter note.
- Measure 218: Bb2, quarter note.
- Measure 219: Bb2, quarter note.
- Measure 220: Bb2, quarter note.
- Measure 221: Bb2, quarter note.
- Measure 222: Bb2, quarter note.
- Measure 223: Bb2, quarter note.
- Measure 224: Bb2, quarter note.
- Measure 225: Bb2, quarter note.
- Measure 226: Bb2, quarter note.
- Measure 227: Bb2, quarter note.
- Measure 228: Bb2, quarter note.
- Measure 229: Bb2, quarter note.
- Measure 230: Bb2, quarter note.
- Measure 231: Bb2, quarter note.
- Measure 232: Bb2, quarter note.
- Measure 233: Bb2, quarter note.
- Measure 234: Bb2, quarter note.
- Measure 235: Bb2, quarter note.
- Measure 236: Bb2, quarter note.
- Measure 237: Bb2, quarter note.
- Measure 238: Bb2, quarter note.
- Measure 239: Bb2, quarter note.
- Measure 240: Bb2, quarter note.

3. Sight-reading

4. Improvisation

Jazz Ensemble Audition Repertoire

Audition excerpts are from A Minot Matter – Fraedrich – US Army Blues

GUITAR/VIBES

1. Perform the excerpt twice starting at m. 93. First time play the written line. Second time go back and comp following the chord progression.

$$\text{Quarter} = 180 - \text{minimum} - \text{Swing}$$

90 OPT. D.S. FOR MORE SOLOS **1** Sax Soli Dm7 F13 Bbmaj7 Eb13 Abmaj7 A7ALT.

96 Dm7 Bb13 Eø7 A7ALT. Dm7 Dm6 Eø7 A7ALT. *mp* VS.

3

Dm7 F13 Bbmaj7 Eb13 Abmaj7 A7ALT. Dm7

105 Bb13 Eø7 A7ALT. Dm7

2. Comp a standard 12 Bar F Blues progression.
3. Sight-reading
4. Improvisation – Optional

The adjudicator will provide materials from the Jamey Aebersold recordings. The rhythm section will be provided for you. The student may also bring something prepared. The rhythm section recording must be provided by CD.

Jazz Ensemble Audition Repertoire

Audition excerpts are from A Minor Matter – Fraedrich – US Army Blues

PIANO

1. Perform the following excerpt. Quarter = 180 – minimum - Swing

Chord progression for the excerpt:

Staff 1: Dm7, F13, Bbmaj13, A7ALT, Dm11

Staff 2: Bbmaj13, A7ALT

Staff 3 (A): Dm7, F13, Bbmaj7Eb13, Abmaj7, A7ALT, Dm7, Bb13, E7b7, A7ALT

Staff 4 (B): Dm7, Dm6, E7b7, A7ALT, Dm7, F13, Bbmaj7, Eb13, Abmaj7, A7ALT, Dm7, Bb13, E7b7, A7ALT, Dm7

2. Comp a standard 12 Bar F Blues progression.
3. Sight-reading
4. Improvisation – Optional

The adjudicator will provide materials from the Jamey Aebersold recordings. The rhythm section will be provided for you. The student may also bring something prepared. The rhythm section recording must be provided by CD.

Jazz Ensemble Audition Repertoire

Audition excerpts are from A Minor Matter – Friedrich – US Army Blues

BASS

1. Perform the following excerpt...repeat is good. Quarter = 180 – minimum - Swing

218

(X) SHOUT!

Dm7 F13 Bbmaj7 Eb13 Abmaj7 A7ALT. Dm7

227 Bb13 Eø7 A7ALT. Dm7

2. Comp a standard 12 Bar F Blues progression.
3. Sight-reading
4. Improvisation – Optional

The adjudicator will provide materials from the Jamey Aebersold recordings. The rhythm section will be provided for you. The student may also bring something prepared. The rhythm section recording must be provided by CD.

Jazz Ensemble Audition Repertoire

Audition excerpts are from A Minor Matter – Friedrich – US Army Blues

DRUMS

1. Perform the following excerpt. Quarter = 180 – minimum - Swing

The musical notation for drums is presented in a single staff with a double bar line at the beginning. The notation includes various rhythmic symbols and markings:

- Measure 226: A circled 'X' above the staff, a 'SHOUT!' box above the staff, and a quarter note followed by a half note.
- Measure 227: A quarter note followed by a half note.
- Measure 228: A quarter note followed by a half note.
- Measure 229: A quarter note followed by a half note.
- Measure 230: A quarter note followed by a half note.
- Measure 231: A quarter note followed by a half note.
- Measure 232: A quarter note followed by a half note.
- Measure 233: A quarter note followed by a half note.
- Measure 234: A quarter note followed by a half note.
- Measure 235: A quarter note followed by a half note.
- Measure 236: A quarter note followed by a half note.
- Measure 237: A quarter note followed by a half note.

1. Perform grooves in the following styles: Funk(Rock)-Latin(Samba)- Shuffle.
2. Sight-reading
3. Improvisation – Optional – Could be in any style

VOCAL AUDITION REPERTOIRE

1. SOLO ----- Student's choice, 2 minute **maximum** length; student must provide an original copy to the adjudicator and accompaniment if needed; the solo need not be memorized.
A CD may be used for accompaniment. You must bring your own CD player.
2. VOCALISE ----- Sieber Thirty-Six "Eight Measure" Vocalises
The adjudicator will play a chord to establish tonality and then the starting pitch. Singers are to apply all score markings in their performance.
Memorization is not required.
- Soprano 1: Sieber Op. 92, Vol. 111, Schirmer ed. #50252790
#29, a cappella, 1st verse, Italian vowels
Dotted quarter note = 48
- Soprano 2: Sieber Op. 92, Vol. 111, Schirmer ed. #50252790
#25, a cappella, 1st verse, Italian vowels
Dotted quarter note = 66
- Alto 1: Sieber Op. 94, Vol. 113, Schirmer ed. #50252810
#35, a cappella, 1st verse, Italian vowels
Quarter note = 72
- Alto 2: Sieber Op. 94, Vol. 113, Schirmer ed. #50252810
#17, a cappella, 1st verse, Italian vowels
Dotted quarter note = 72
- Tenor: Sieber Op. 95, Vol. 114, Schirmer ed. #50252820
#29, a cappella, 1st verse, Italian vowels
Quarter note = 88
- Bass: Sieber Op. 97, Vol. 116, Schirmer ed. #50252840
#6, a cappella, 1st verse, Italian vowels
Quarter note = 66
3. SIGHTREADING ----- Students may sing the sightreading etude with numbers, Solfeg, on a neutral syllable or any other method with which they are comfortable. The adjudicator will play or sing a tonic triad beginning and ending with the starting pitch and will allow the student 20 seconds to review the etude.
A new starting pitch will be given at Measure #9

Vocal Jazz Audition Repertoire

The adjudicator will provide materials from the Jamey Aebersold recordings. The changes and rhythm sections will be provided for you in audition via CD. Each performer must provide their own book for reference.

Required materials for this audition, Jamey Aebersold – Volume 25, “All-Time Standards,” are available from your local sheet music dealer. This collection will be a permanent part of the vocal jazz audition. A key center and beginning pitch will be provided by the adjudicator before the song begins. The solo is to be sung only twice through, regardless of how many repeats occur on the recording. The first time through, the interpretation should be close to the original material (some individual interpretation is acceptable). The second time through, the student can lyrically, melodically, and/or rhythmically embellish the existing material, or use scat syllables or use a combination of the above. The adjudicator will start and stop the audio materials.

Soprano 1

1. Scales – Sung a cappella, one octave, both ascending and descending, sung on syllables “doo-bah” or “doo-vah.” Begin each scale on A4 (above middle C).
Tempo: Quarter Note = 90.
 - a. Major (straight eighth notes)
 - b. Natural Minor (swung eighth notes)
2. Prepared Solo Selection – #12 -“Come Rain or Shine”
3. Sight-Reading – 12 Measures, a cappella
- Any method may be used, including solfege, numbers or a neutral syllable.

Soprano 2

1. Scales – Sung a cappella, one octave, both ascending and descending, sung on syllables “doo-bah” or “doo-vah.” Begin each scale on G4 (above middle C).
Tempo: Quarter Note = 90.
 - a. Major (straight eighth notes)
 - b. Natural Minor (swung eighth notes)
2. Prepared Solo Selection – #12 -“Come Rain or Shine”
3. Sight-Reading – 12 Measures, a cappella
- Any method may be used, including solfege, numbers or a neutral syllable.

Alto 1

1. Scales – Sung a cappella, one octave, both ascending and descending, sung on syllables “doo-bah” or “doo-vah.” Begin each scale on D4 (above middle C).
Tempo: Quarter Note = 90.
 - a. Major (straight eighth notes)
 - b. Natural Minor (swung eighth notes)
2. Prepared Solo Selection – #12 -“Come Rain or Shine”
3. Sight-Reading – 12 Measures, a cappella
- Any method may be used, including solfege, numbers or a neutral syllable.

Alto 2

1. Scales – Sung a cappella, one octave, both ascending and descending, sung on syllables “doo-bah” or “doo-vah.” Begin each scale on G3 (below middle C).
Tempo: Quarter Note = 90.
 - a. Major (straight eighth notes)
 - b. Natural Minor (swung eighth notes)
2. Prepared Solo Selection – #12 -“Come Rain or Shine”
3. Sight-Reading – 12 Measures, a cappella
 - Any method may be used, including solfege, numbers or a neutral syllable.

Tenor

1. Scales – Sung a cappella, one octave, both ascending and descending, sung on syllables “doo-bah” or “doo-vah.” Begin each scale on F3 (below middle C).
Tempo: Quarter Note = 90.
 - a. Major (straight eighth notes)
 - b. Natural Minor (swung eighth notes)
2. Prepared Solo Selection – #12 -“Come Rain or Shine”
3. Sight-Reading – 12 Measures, a cappella
 - Any method may be used, including solfege, numbers or a neutral syllable.

Bass

1. Scales – Sung a cappella, one octave, both ascending and descending, sung on syllables “doo-bah” or “doo-vah.” Begin each scale on D3 (below middle C).
Tempo: Quarter Note = 90.
 - a. Major (straight eighth notes)
 - b. Natural Minor (swung eighth notes)
2. Prepared Solo Selection – #12 -“Come Rain or Shine”
3. Sight-Reading – 12 Measures, a cappella
 - Any method may be used, including solfege, numbers or a neutral syllable.

ND ALL-STATE WIND INSTRUMENT AUDITION JUDGING SHEET

Student's Name (first) _____ (last) _____ (instrument) _____

Audition Site (List city) _____

Prepared Solo: (Title) _____ (Composer) _____

	<u>Score</u>	<u>Points</u>		
Scales	_____	10	Major	
	_____	10	Chromatic	
				Total (20 points are possible) _____

Required Etude	_____	5	Pitch accuracy	
	_____	5	Rhythm accuracy	
	_____	5	Articulation	
	_____	5	Musicality	
				Total (20 points are possible) _____

Prepared Solo	_____	5	Pitch accuracy	
	_____	5	Rhythmic accuracy	
	_____	5	Attention to score markings	
	_____	5	Articulation	
	_____	5	Musicality	
				Total (25 points are possible) _____

Sight Reading	Measure numbers: (Check boxes for measure numbers played incorrectly)															
	1	2	3	4	5	6	7	8	9	10	11	12	13	14	15	16

Total (16 points are possible) _____

Overall Musicianship	_____	10	Tone quality	
	_____	10	Musicality	
				Total (20 points are possible) _____

Grand Total _____

Adjudicator's signature _____

Date _____

ND All-State Percussion Audition Judging Sheet

Student's Name (first) _____ (last) _____

Audition Site (list city) _____

Prepared Solo: (title) _____ (composer) _____

1. Classical Snare Etude _____ / 10 points possible

2. Rudimental Snare Etude _____ / 10 points possible

3. Classical Mallet Etude _____ / 20 points possible

4. Classical Timpani Etude _____ / 20 points possible

5. Prepared Solo _____ / 25 points possible

Circle one: Rudimental Snare / Classical Snare / Two Mallet / Four Mallet / Timpani

6a. Snare Sight Reading _____ / 8 points possible

Measure numbers: (Check boxes for measures played incorrectly)

1	2	3	4	5	6	7	8

6b. Mallet Sight Reading _____ / 8 points possible

Measure numbers: (Check boxes for measures played incorrectly)

1	2	3	4	5	6	7	8

7. Overall Musicianship _____ / 15 points possible

Total _____ / 116 points possible

Adjudicator's signature _____ Date _____

ND ALL-STATE JAZZ ENSEMBLE WIND INSTRUMENT JUDGING SHEET

Student's Name (first) _____ (last) _____

Instrument: _____

Audition Site (List city) _____

Scales

_____ 10 Major

_____ 10 Major

Total _____

Required Excerpt

_____ 10 pts/each Style

_____ 10 pts/each Attention to score markings

Total _____

Sight Reading

Measure numbers: (Check boxes for measures played incorrectly)

1	2	3	4	5	6	7	8	9	10	11	12

Total (12 points are possible) _____

Overall Musicianship

_____ 10 Tone quality

_____ 10 Musicality

Total _____

Grand Total _____

Improv

Range

Adjudicator's signature _____ Date _____

ND ALL-STATE JAZZ ENSEMBLE RHYTHM SECTION JUDGING SHEET

Student's Name (first) _____ (last) _____

Instrument: _____

Audition Site (List city) _____

Comping Techniques

_____ 10 Excerpt

_____ 10 F Blues/Funk

Total _____

Soloing Techniques (as needed)

_____ 10 Excerpt

_____ 10 F Blues/Shuffle

Total _____

Style/Musicality

_____ 10 Excerpt

_____ 10 F Blues/Latin

Total _____

Sight-reading Measure numbers: (Check boxes for measures played incorrectly)

1	2	3	4	5	6	7	8	9	10	11	12

Total _____

Grand Total (72) _____

Adjudicator's signature _____ Date _____

ND ALL-STATE CHORAL AUDITION JUDGING SHEET

Student's Name (first) _____ (last) _____ **VOICE:** Soprano 1 Soprano 2 Tenor

Audition Site (List city) _____ Alto 1 Alto 2 Bass

Prepared Solo: (Title) _____ (Composer) _____

	<u>Score</u>	<u>Points</u>	
Solo Performance	_____	5	Tone quality
	_____	5	Breath support
	_____	5	Pitch accuracy
	_____	5	Rhythm accuracy
	_____	5	Phrasing accuracy
	_____	5	Interpretation
	_____	5	Attention to score markings
	_____	5	Diction
	_____	4	Quality
	_____	4	Difficulty
			Total (48 points are possible) _____

All-State Vocalise	_____	5	Tone quality
	_____	5	Breath support
	_____	5	Pitch accuracy
	_____	5	Rhythm accuracy
	_____	5	Phrasing accuracy
	_____	5	Interpretation
	_____	5	Attention to score markings
	_____	5	Diction
			Total (40 points are possible) _____

Sight Reading .5 for Pitch .5 for Rhythm – per measure

1	2	3	4	5	6	7	8
9	10	11	12	13	14	15	16

Total (16 points are possible) _____

Grand Total _____

Adjudicator's signature _____

Date _____

ND ALL-STATE STRING INSTRUMENT AUDITION JUDGING SHEET

Student's Name (first)_____ (last)_____ (instrument)_____

Audition Site (List city) _____

Prepared Solo: (Title)_____ (Composer)_____

	<u>Score</u>	<u>Points</u>	
Scale	_____	10	Pitch accuracy
	_____	5	Bow control
	_____	5	Rhythmic accuracy

Total (20 points are possible) _____

Required etude	_____	5	Rhythmic accuracy
	_____	5	Pitch accuracy
	_____	5	Bow control
	_____	5	Attention to score markings

Total (20 points are possible) _____

Solo	_____	5	Rhythmic accuracy
	_____	5	Pitch accuracy
	_____	5	Bow control
	_____	5	Interpretation
	_____	1-3	Difficulty of selection

Total (23 points are possible) _____

Sight Reading Measure numbers: (Check boxes for measures played incorrectly)

1	2	3	4	5	6	7	8	9	10	11	12	13	14	15	16

Total (8 points possible--1/2 point per measure) _____

Overall Musicianship	_____	14	Tone quality
	_____	15	Musicality

Total (29 points are possible) _____

Grand Total _____

Adjudicator's signature _____ Date _____

ND ALL-STATE VOCAL JAZZ JUDGING SHEET

Student's Name (first) _____ (last) _____

Voice _____

Audition Site (List city) _____

Score Points

Scales

_____ 10 Major
_____ 10 Natural Minor

Total _____

Prepared Solo

_____ 25 1st Chorus
_____ 25 2nd Chorus

Total _____

Sight Reading

Measure numbers: .5 for Pitch .5 for Rhythm – per measure

1	2	3	4	5	6	7	8
9	10	11	12	13	14	15	16

Total (16 points are possible) _____

Overall

Musicianship _____ 10 Tone quality
_____ 10 Musicality

Total _____

Grand Total(106 Possible)

=====

Improv

Range

Adjudicator's signature _____ Date _____